



BWF Manager (V2.0) operation manual
(for Windows and Macintosh)



Please read before using

Allowance of use

The specifications of this software and the contents of this document are subject to change without prior notice. Be assured Fostex Company is not responsible for any warranties or any supports for any direct or indirect losses or damages occurred from use of this software application or this document.

The BWF manager is a freeware application and anyone can use it.

The copyright of this software application is reserved by Fostex Company. Sales distribution, lease or rental of this software application, or any modifications to this software application without permission are prohibited.

Note that this software application is not a commercial product. Therefore, Fostex Company and its distributors/service stations are not able to answer to any questions such as concrete process or operation methods by telephones, e-mails etc.

Introduction

“BWF Manager” is a software application that enables you to convert track data (a BWF interleave file) recorded by a Fostex digital recorder (FR-2, PD-6 or DV824) to a mono BWF file or convert a mono BWF file to an interleave file on a personal computer.

You can import a converted mono BWF file to an audio software application such as ProTools for editing, while a BWF interleave file converted from a mono BWF file can be played back by the Fostex FR-2, PD-6 and DV824.

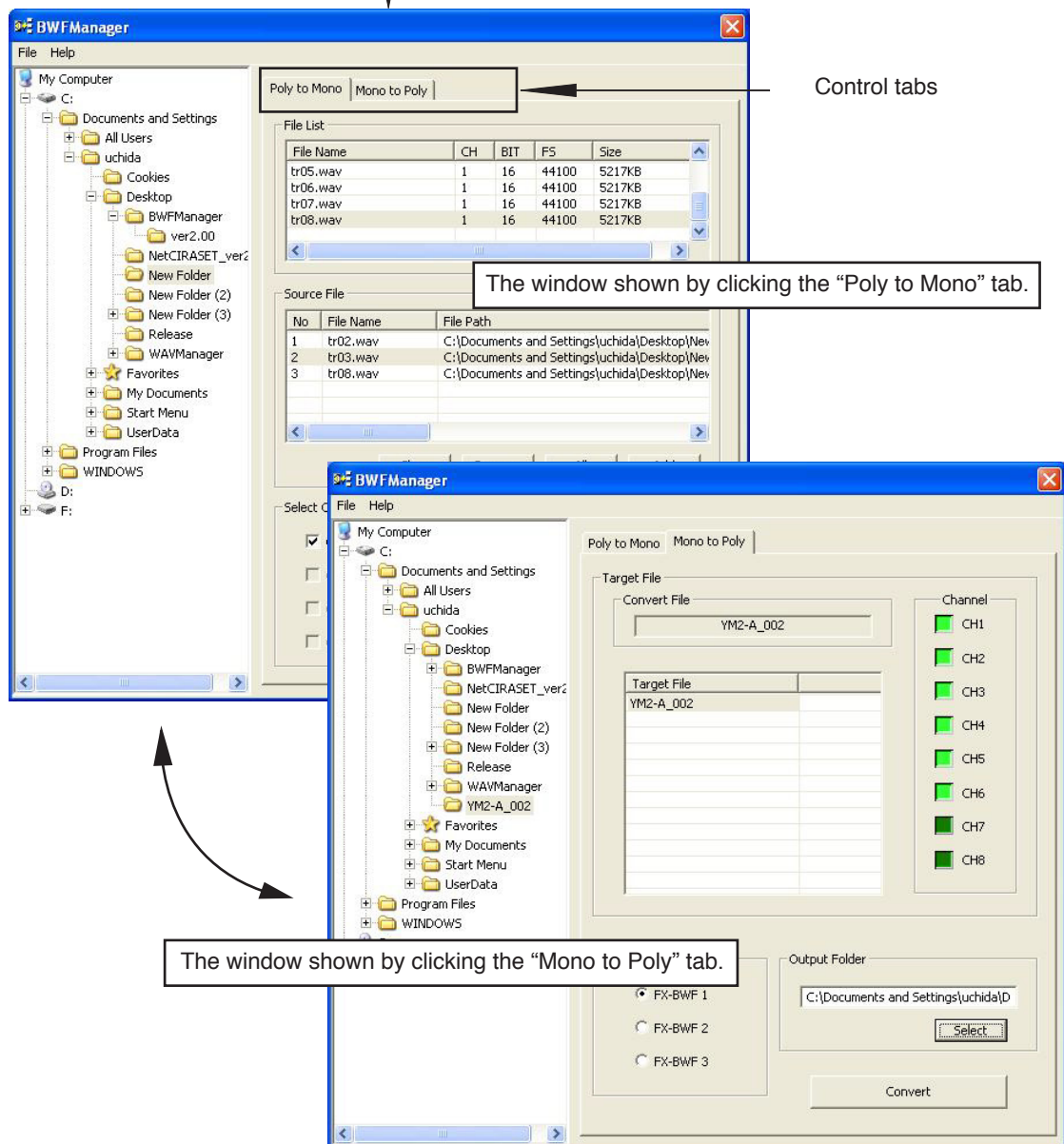
Operating Environment

BWF Manager (V2.0) operates on Windows XP Home Edition, Windows XP Professional Edition and Macintosh OS X 10.4 or higher (including Intel Macintosh).

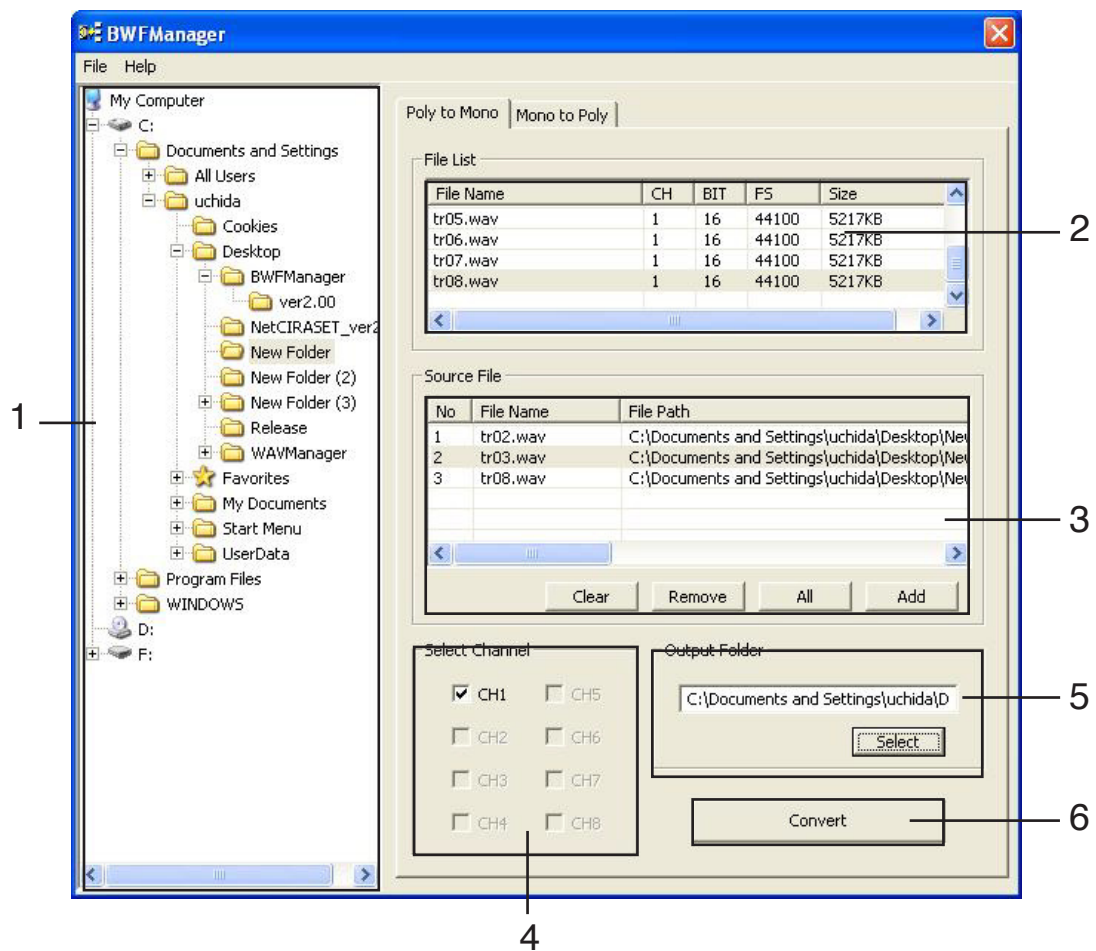
Starting BWF Manager

Double-clicking “BWF Manager” on a personal computer activates BWF Manager and brings up the window (“Poly to Mono”) for converting an interleave file to a mono file. By clicking the “Mono to Poly” control tab, you can switch to the window for converting a mono BWF file to an interleave file.

On the left of each window, the directory tree is shown. On the Windows edition, “My computer” is the root, while “Users” is the root on the Macintosh edition. You can select a desired directory from the list. See the description on the next and following pages for the operation details.



Converting an interleave file to a mono file



1. Directory tree

In the directory tree, you can select the folder which contains the BWF file(s) you want to convert.

2. File List

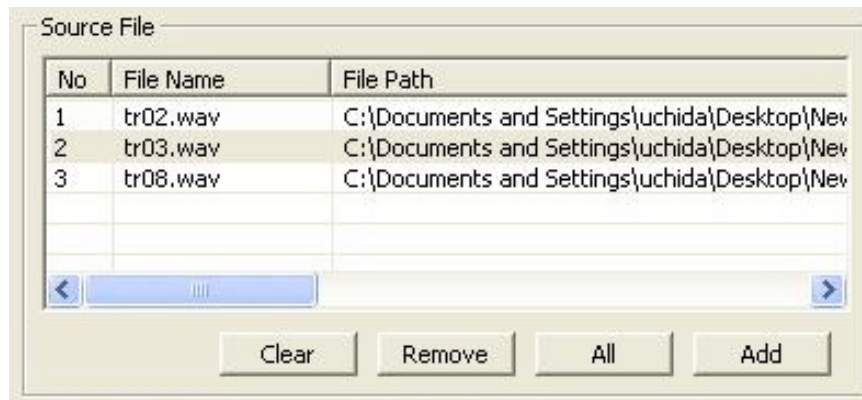
All BWF files in the folder you select in the directory tree are listed with file information. From the file list, you can select the BWF file(s) you want to convert.

File List				
File Name	CH	BIT	FS	Size
tr05.wav	1	16	44100	5217KB
tr06.wav	1	16	44100	5217KB
tr07.wav	1	16	44100	5217KB
tr08.wav	1	16	44100	5217KB

3. Source File List

The files you select from the “File List” are listed.

The following buttons can be used to add or remove the file(s) to or from the “Source File” list.



“Add” button

Clicking this button adds the currently highlighted file in the “File List” to the “Source File” list.

“All” button

Clicking this button adds all the files in the “File List” to the “Source File” list.

“Remove” button

Clicking this button removes the currently highlighted file in the “Source File” list.

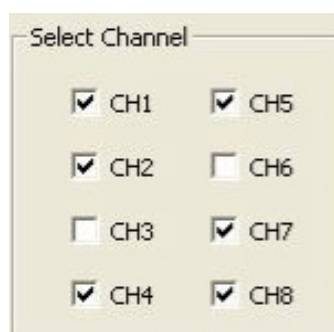
“Clear” button

Clicking this button removes all the files in the “Source File” list.

4. Select Channel

This section displays channels of the currently highlighted file in the “Source File” list and allows selection of the channels to be converted by channel.

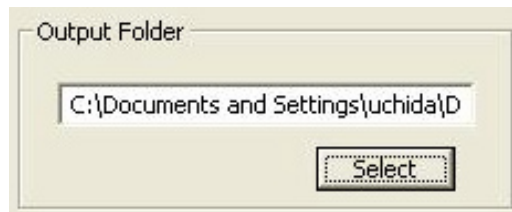
Depending on the highlighted file, the number of active channels differs. For example, if the highlighted file has six channels, “CH1” through “CH6” are displayed in black (“CH7” and “CH8” are grayed out) and the associated checkboxes are active.



5. Output Folder

You can select a destination folder where the converted file is stored.

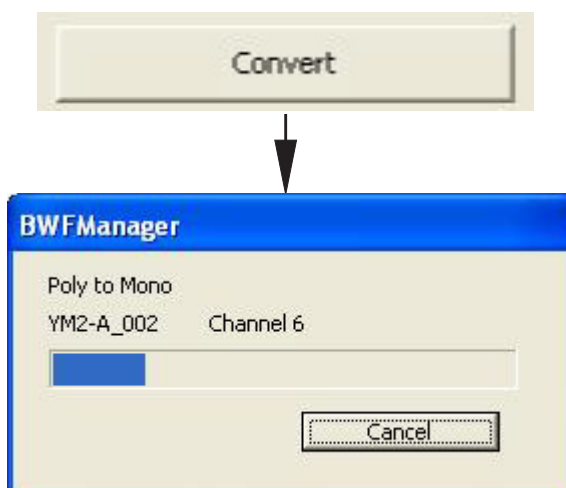
Clicking the “Select” button brings up the dialog for selecting a folder. By selecting a desired folder from the dialog, the folder name is set in the edit control section. You can also specify the desired folder by directly entering the folder name to the edit control section.



6. Convert button

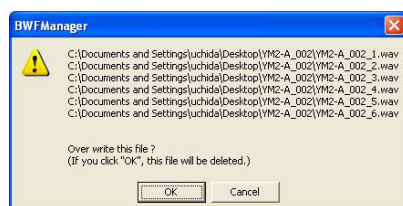
After selecting the Source File(s) and Output Folder, clicking the “Convert” button starts the file conversion and displays a progress meter. A new folder with the same name as a source file is automatically created and the converted files are stored in this folder.

The name of a converted file is “{Filename}_{Channel number}” (for example, “Song1_1.wav”).



<Note>

If a file with the same name as the converted file already exists in the Output Folder, the warning message as below appears. Clicking the “OK” button overwrites the existing file, while clicking the “Cancel” button cancels the file conversion.

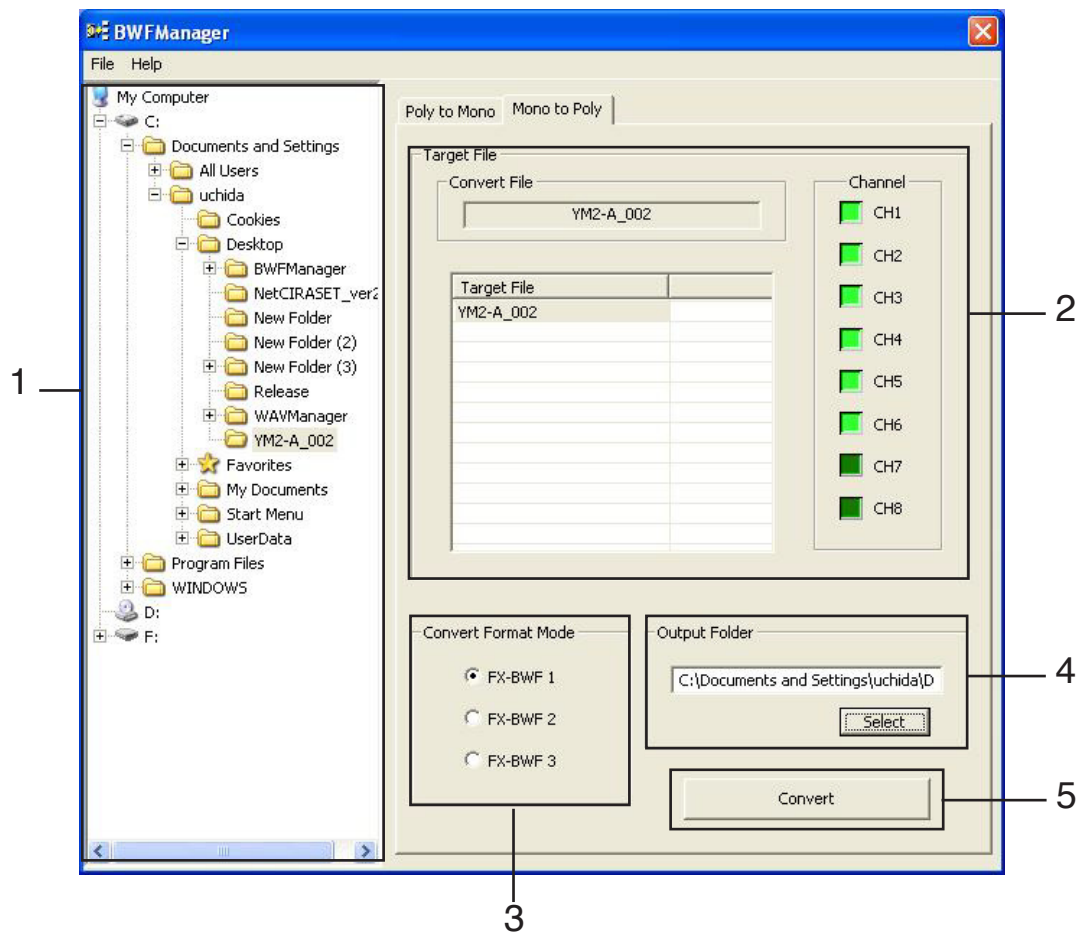


<Note>

If you click the “Convert” button without specifying the Output Folder, the warning message as below appears. Click the “OK” button and specify the Output Folder, then press the “Convert” button.



Converting a mono file to an interleave file

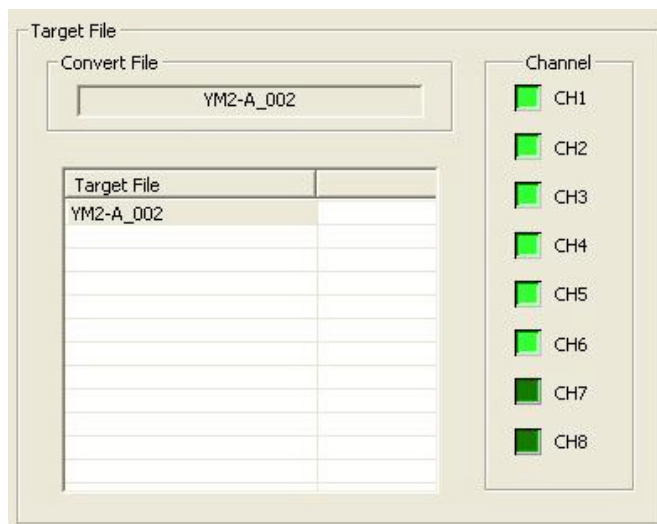


1. Directory tree

In the directory tree, you can select the folder which contains the BWF file(s) you want to convert.

2. Target File

All available files in the folder selected in the directory tree are listed here.



Only files whose filename format is "{Filename}_{Channel number}" can be converted. In the "Target File" section, the filename after the file conversion is displayed. Therefore, even if a folder contains more than one mono file of the same song, only one filename (i.e. song name) is displayed.

For example, if there are two files named "Song1_1.wav" and "Song1_2.wav" in the folder, the filename displayed here is "Song1".

By highlighting the desired file in the "Target File" list, the filename is displayed in the "Convert File" box and the associated indicators of channels to be converted light up.

3. Convert Format Mode

Selects the convert format mode. Depending on the mode, the format of the interleave file converted from the mono BWF files differs. You can select from the following three modes.

"FX-BWF 1":

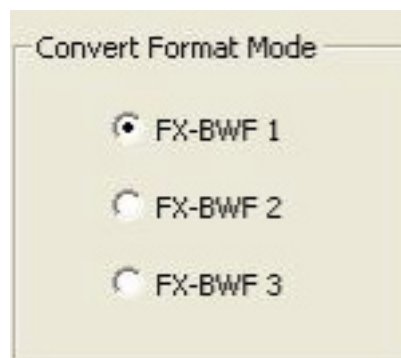
The mono BWF files are converted to an interleave file of the Fostex DV824 format and Fostex PD-6 (version 2.30 or more) format.

"FX-BWF 2":

The mono BWF files are converted to an interleave file of the Fostex PD-6 (version 2.30 or less) format.

"FX-BWF 3":

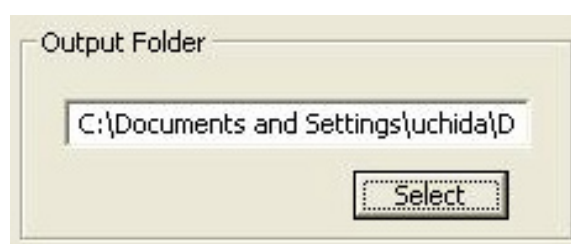
The mono BWF files are converted to an interleave file of the Fostex FR-2 format.



4. Output Folder

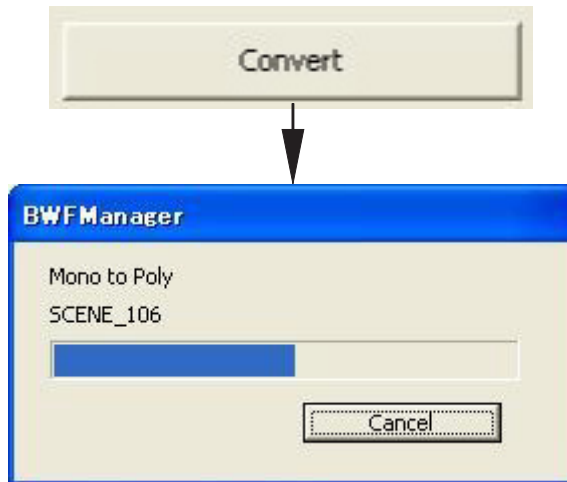
Selects the folder the converted file is stored to.

Clicking the "Select" button brings up the dialog for selecting a folder. By selecting a desired folder from the dialog, the folder name is set in the edit control section. You can also specify the desired folder by directly entering the folder name to the edit control section.



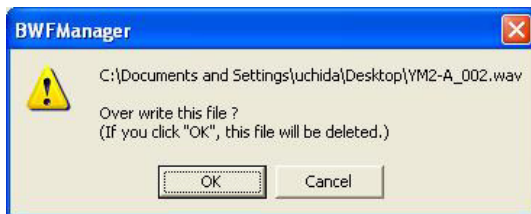
5. Convert button

After selecting a file to be converted and Convert Format Mode, clicking the “Convert” button starts the file conversion in the selected Convert Format Mode.



<Note>

If a file with the same name as a converted file already exists in the Output Folder, the warning message as below appears. Clicking the “OK” button overwrites the existing file, while clicking the “Cancel” button cancels the file conversion.



<Note>

If you click the “Convert” button without specifying the Output Folder, the warning message as below appears. Click the “OK” button and specify the Output Folder, then press the “Convert” button.

